

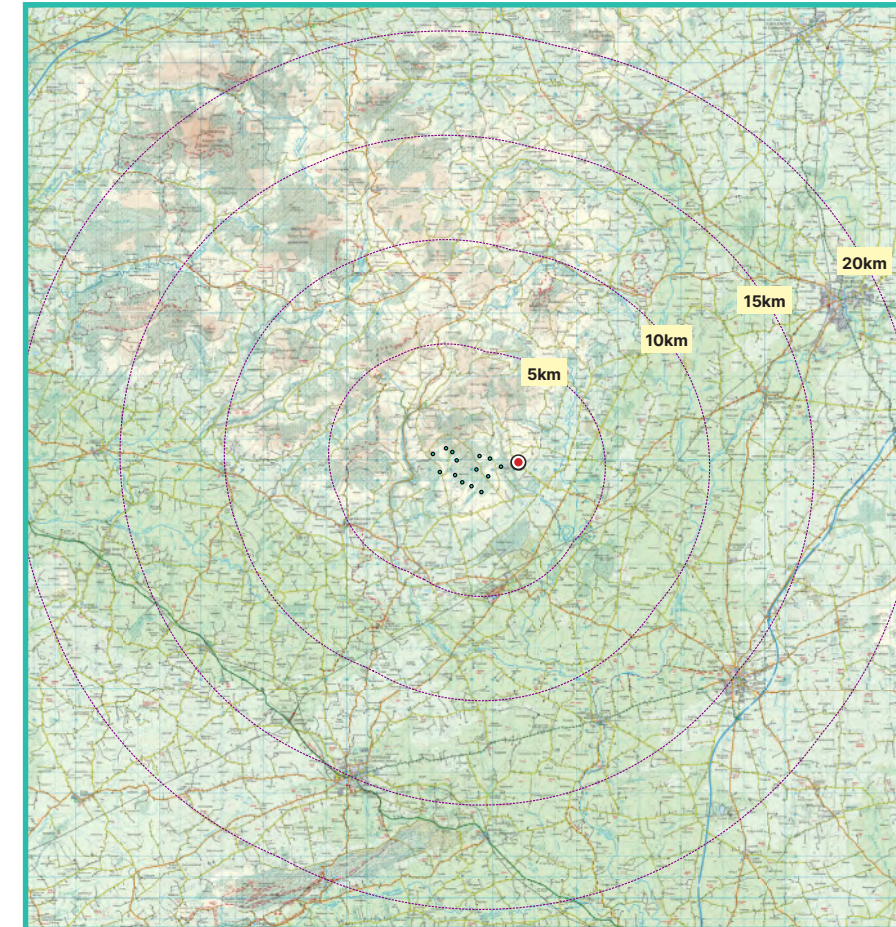
View Point 02

Glenough Lower

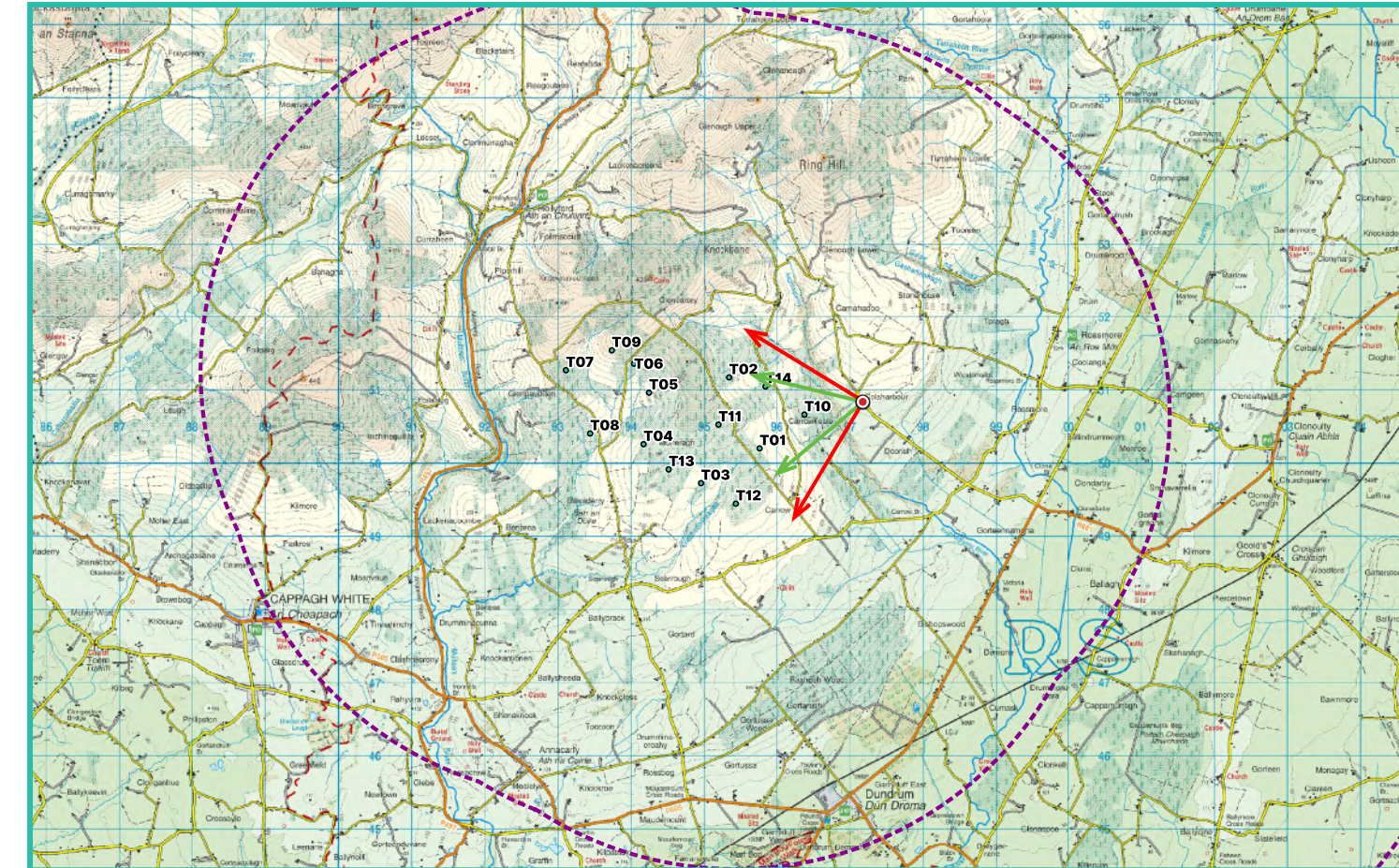
Photomontage 02

View from the L1284 Local Road in the townland of Glenough Lower. Located approximately 820m east of the nearest turbine (T10).

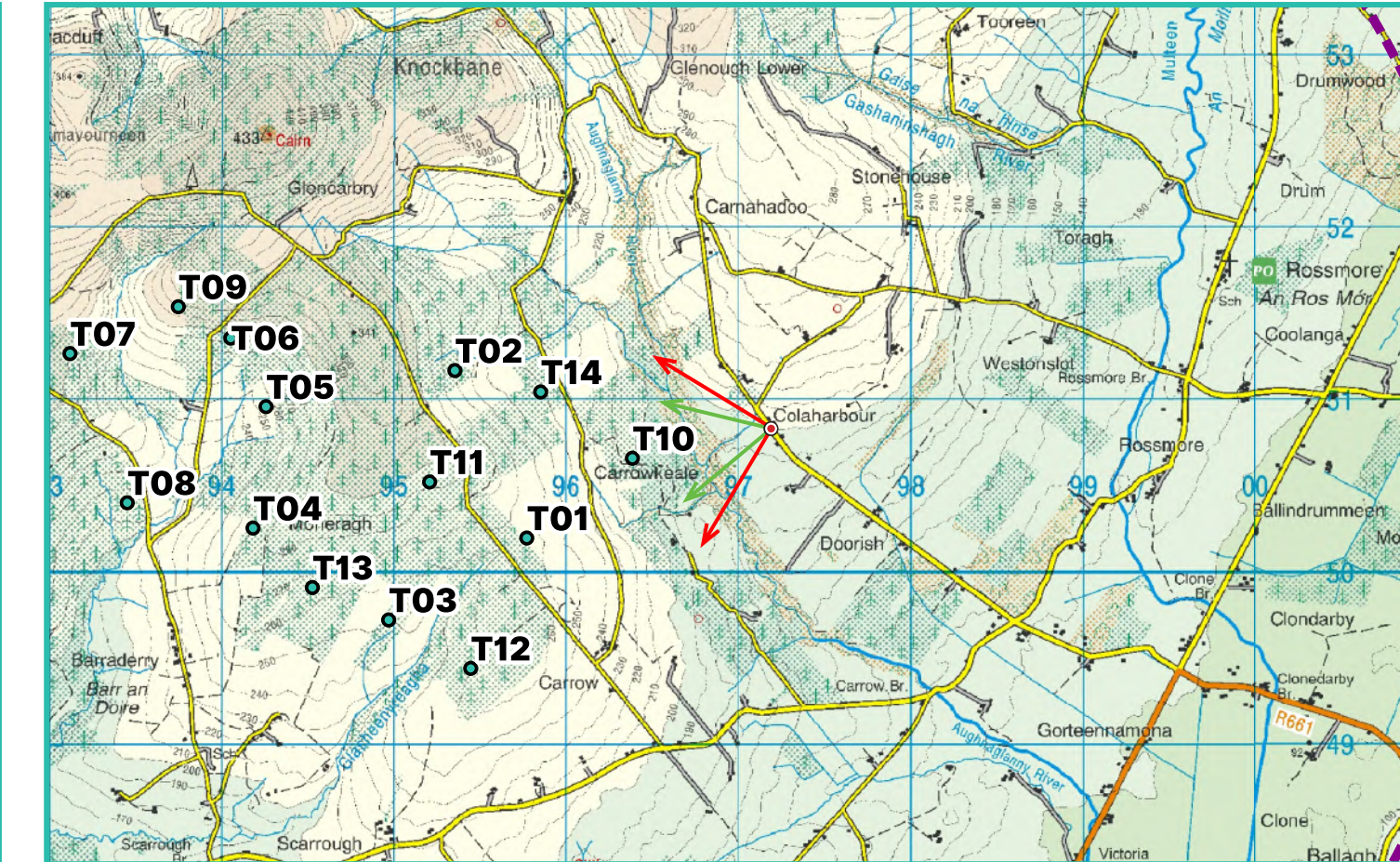
View point grid reference	E 597145 N 650868
Date of image taken	2024-09-11
Time of image taken	12:09
View point elevation	198m
Angle of Views	90° / 53.5°
View Direction (Image Centre)	256°
Number of proposed turbines visible in Photomontage	13/14
Turbine Hub Height	103.5m
Turbine Rotor Diameter	163m
Turbine Tip Height	185m
Montage Type	Type 4 Photomontage / Survey / Scale Verifiable
Camera & Lens	Canon 5D Mark III / Full Frame Sensor with a 50mm Lens
Tripod	Manfrotto 190X extended to approx 1.5m.
Map Licence	© Ordnance Survey Ireland. All rights reserved. Licence number CYAL50267517



View point relative to 20km radius.



View point relative to proposed wind farm site.



Detail of view point location.

Map Legend

Area shown in 90° view

Area shown in 53.5° view

View Point

Proposed Carrow Wind Farm

Wireline Legend

Proposed Carrow Wind Farm

Proposed Met Mast (103.5m)

Existing Wind Farms

Permitted Wind Farms

Proposed Wind Farms

Prepared by
MKO
Planning & Environmental Consultants
Tuam Road, Galway.

Tel: (091) 73 56 11
E-mail: info@mkoireland.ie
Website: www.mkoireland.ie



90° View Extent

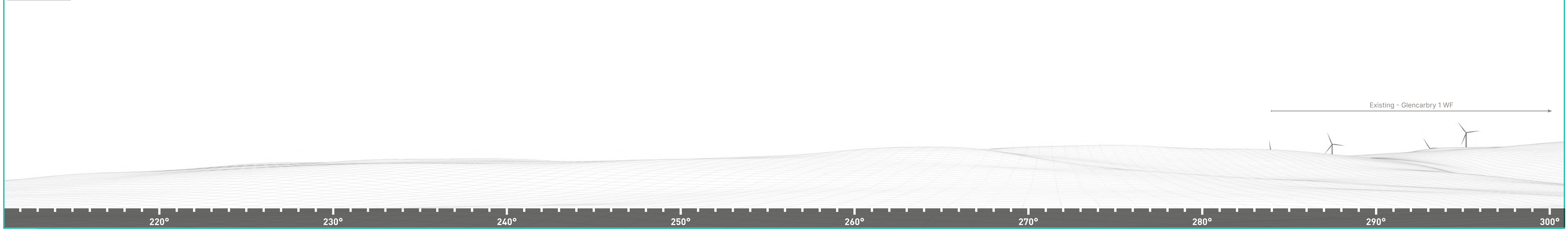
Key Image at 120°



53.5° View Extent



Matching Wireline



220°

230°

240°

250°

260°

270°

280°

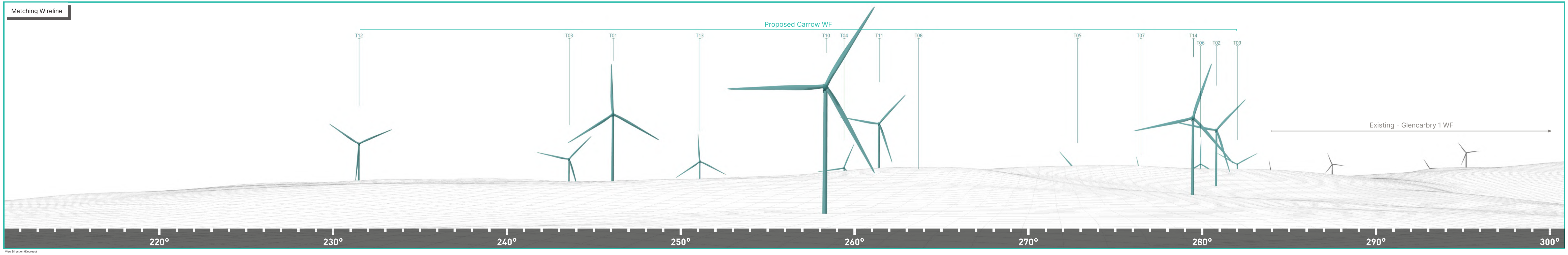
290°

300°

Proposed Photomontage with Cumulative at 90°



Matching Wireline



Proposed Photomontage with Cumulative at 53.5°



230°

240°

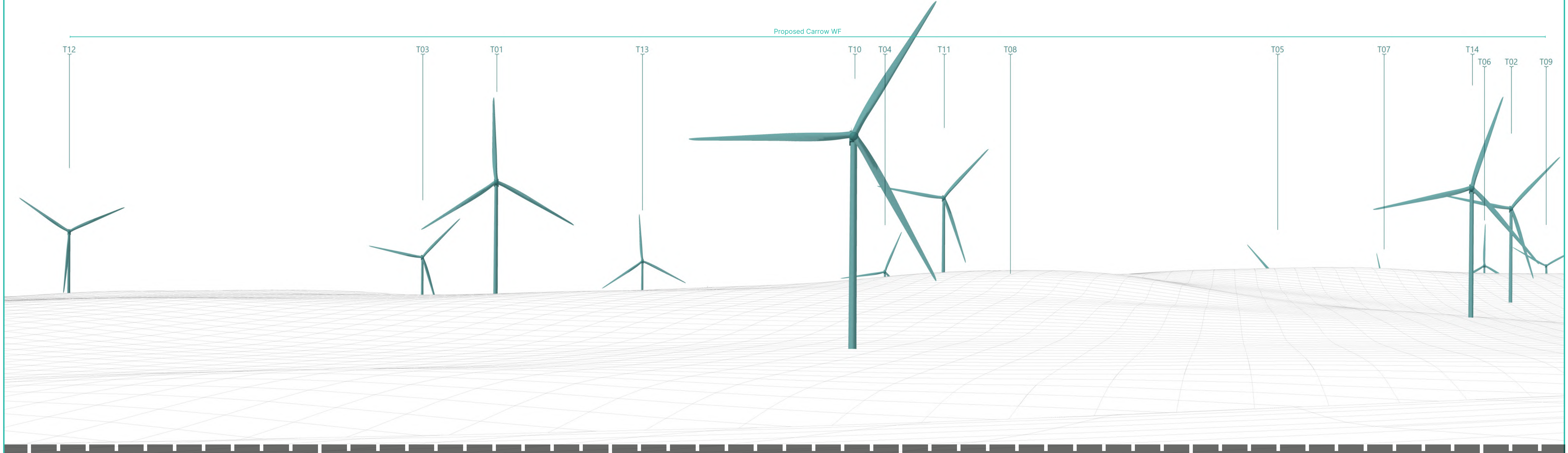
250°

260°

270°

280°

Matching Wireline



230° 240° 250° 260° 270° 280°